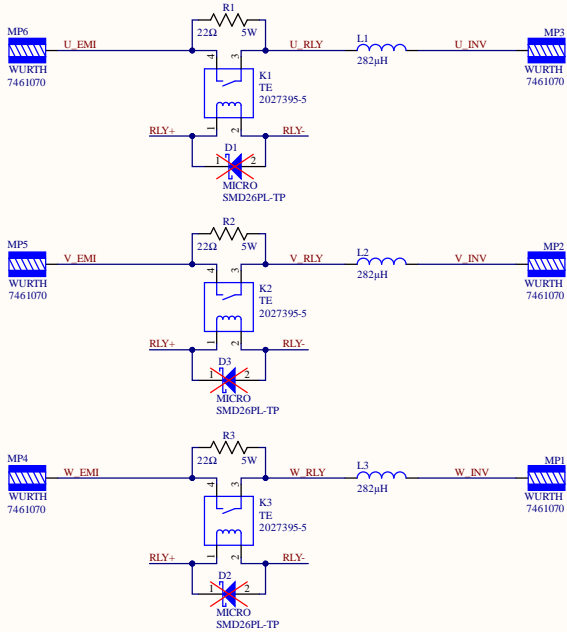


BOOST INDUCTORS + PRE-CHARGE

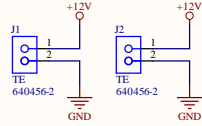
ATTACH TO
EMI STAGE
←

ATTACH TO
CRD25DA12N-FMC
→



Attach on top of active-front-end EMI stage and CRD25DA12N-FMC power stage. Use WURTH 7461120 to connect the PCBs. Populate diodes if CRD25DA12N-FMC freewheeling diode is far away. Relay + resistors combination used for soft-start operation.

FAN POWER

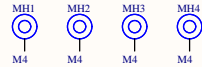


Attach one connector to fan headers on CRD25DA12N-FMC to supply power to this PCB. Attach the other connector to fan on this board. Alternatively, attach fan on this board directly to CRD25DA12N-FMC fan headers and do not use these headers.

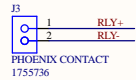
FAN ATTACH



MOUNTING HOLES

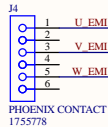


RELAY CONTROL



Control relays using relay output of CRD25DA12N-FMC. Suggested mating connector: PHOENIX CONTACT 1792757.

VOLTAGE FEEDBACK



Feedback to CRD25DA12N-FMC voltage measurements. Suggested mating connector: PHOENIX CONTACT 1792799.

Wolfspeed

[No Variations]

Title: 25kW WolfPACK Active Front End - Boost Stage

Drawing No: CRD25DA12N-FMC-AFE-BOOST

Date: 04/2024

Size: B

Revision: 1.0

Sheet 1 of 1